



## TMR3300 SERIES AUTOMATIC LINK ESTABLISHMENT (ALE) CONTROLLER

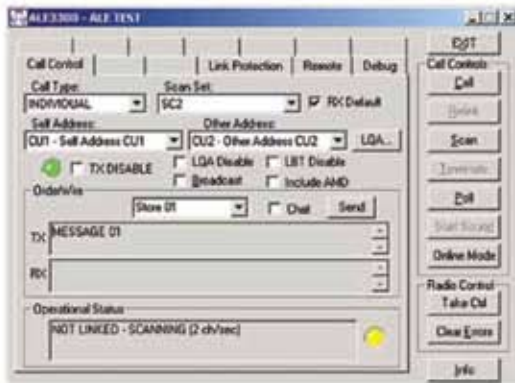
### TMR3301 SINGLE ALE

Part Number 799075-000-001

### TMR3302 DUAL ALE

Part Number 799075-000-002

- 1U/19-Inch Rack Mounted Single or Dual ALE System
- ALE to MIL-STD-188-141B App A with Link Protection to App B Level 2
- U.S. Government JITC Certified
- ALE System Configuration and Control Established with Rack Mounted Laptop Computer and ALE3300 ALE Controller Software
- Control Also Available from TMR6490 Local Or Remote Control Unit (LCU/RCU)



ALE3300 Controller Software



TMR3302 ALE Controller Front View



TMR3302 ALE Controller Back View

### GENERAL

- Automatic best channel selection, based on current conditions
- Automatic initialization at power-up to user configuration
- Extensive diagnostics and error recovery
- Detailed log reports of system activity and diagnostic operations

### ENVIRONMENTAL/PHYSICAL

#### Temperature

- MIL-STD-810F methods 501.4 and 502.4
  - Operation: -6° C to +49° C
  - Storage: -33° C to +71° C

#### Humidity

- MIL-STD-810F method 507.4

#### Vibration

- MIL-STD-167-1 (Ships)

#### Shock

- MIL-STD-901D (in a shock-mounted cabinet)

#### EMC/EMI

- MIL-STD-461E

#### Size (H x W x D)

- 1.75 x 19 x 10 in (44 x 483 x 254 mm)

#### Weight

- Single ALE: 7 lbs (3 kg)
- Dual ALE: 9 lbs (4 kg)

### ELECTRICAL

#### Power

- 85-264 VAC, 47-63 Hz autoranging, 10 W maximum

#### Audio Level

- 0 dBm nominal

#### Audio Input Impedance

- 600 ohms

#### Control

- RS-232

### System Block Diagram

